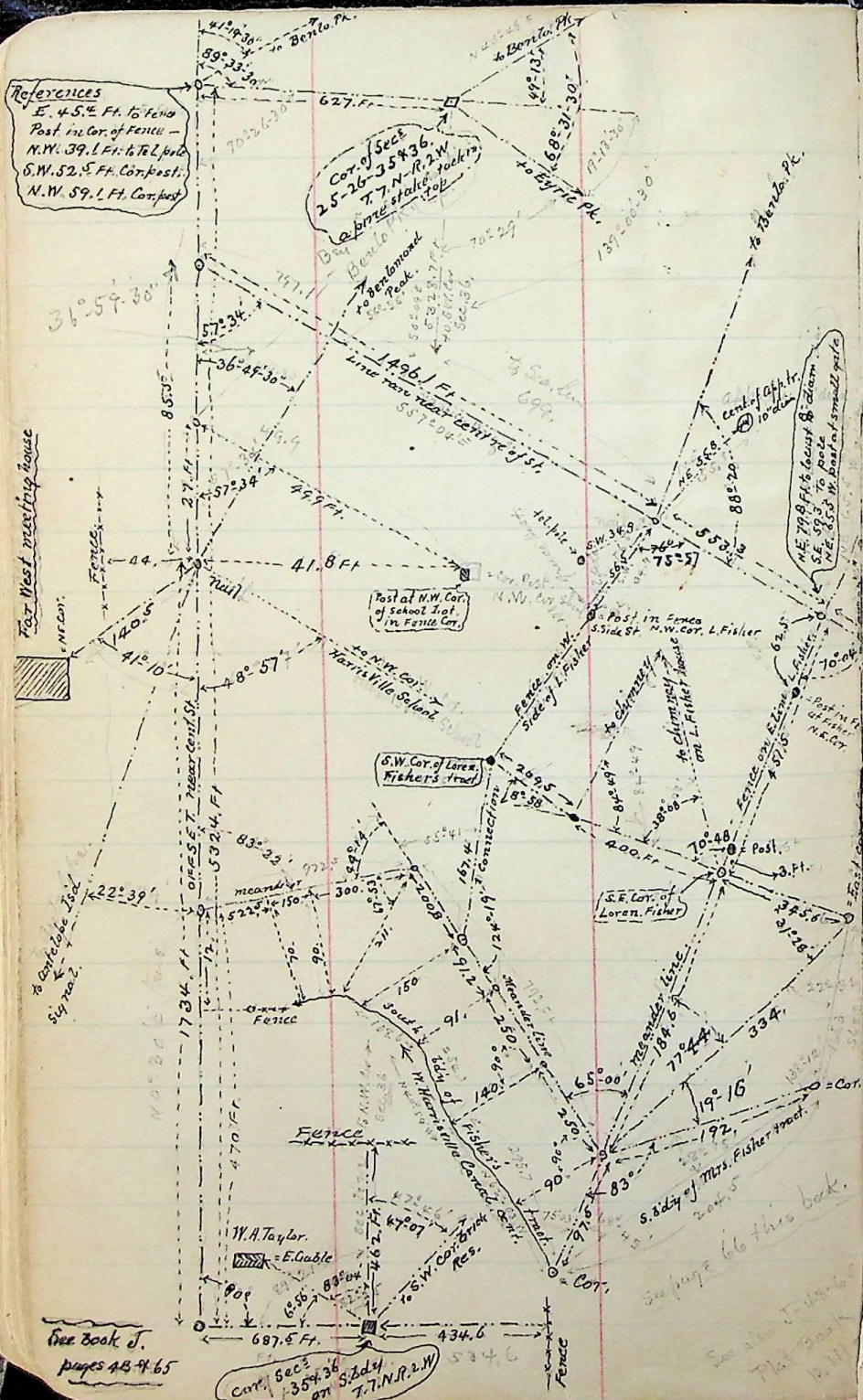


References

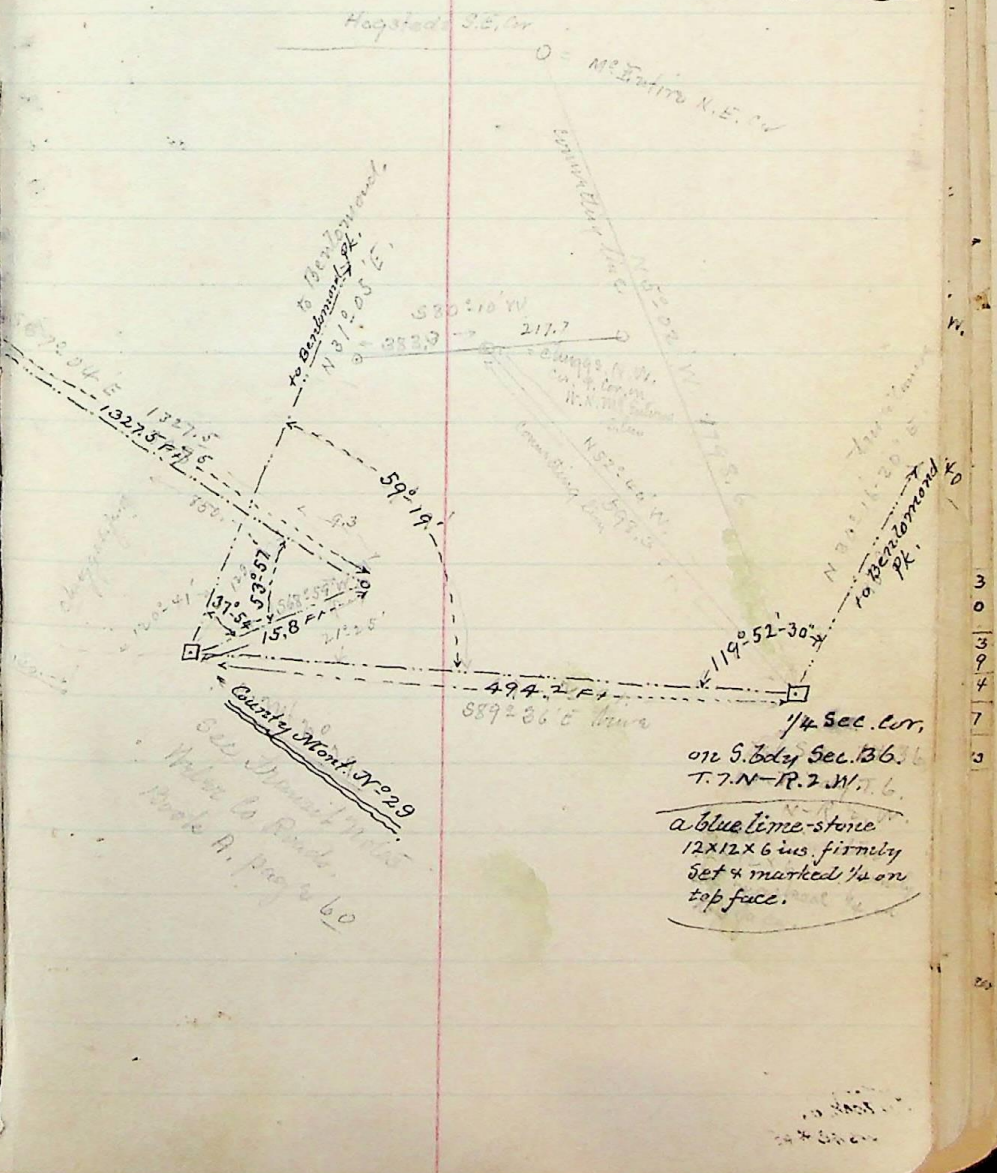
E. 45.5⁴ Ft. to Fence Post in Cor. of Fence - N.W. 39.1 Ft. to T&L pole S.W. 52.5 Ft. Cor. post. N.W. 59.1 Ft. Cor. post.



See Book J. pages 48-4-65

Cor. Sec. 36 on S. 2d of T. 7. N. R. 2. W.

Survey of the Fishers' tracts of land (2) in S.W. 1/4 of Sec. 36. Tp. 7. N-R. 2. W. School lands Sept. 15th & 16-1896.



See Journal of W. H. Blake to Bunker N. Page 60

1/4 Sec. cor. on S. side Sec. 36. T. 7. N-R. 2. W. a blue lime-stone 12x12x6 ins. firmly set & marked 1/4 on top face.

3
0
3
9
4
7
3